



afitexinov
GEOSYNTHETICS

13-15 rue Louis Blériot
28300 Champhol
Tél. : +33 (0)2 37 18 01 51
Fax : +33 (0)2 37 18 01 60
afitex@afitex.com

www.afitex.com



AFITER-V202310-001



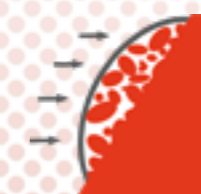
Nouveauté 2023
Lancement à l'occasion de
pollutec
ACTIVATEUR DE LA TRANSITION ÉCOLOGIQUE

AFITER® 3D

**Puncture Protection,
Cover Soil, Veneer Reinforcement**



Earth retention



Erosion control



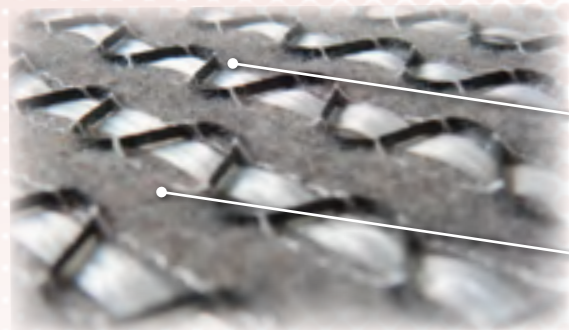
Protection

AFITER® 3D

Puncture protection, cover soil, veneer reinforcement

Natural slopes soil cover is usually subjected to the first impact of climatic conditions. Rain, freezing & wind all are main triggers of slope stability failures. This impact gets more and more profound over time. Leaving this untreated leads to deeper instabilities and may well impact the overall stability of the slope itself, resulting in significant restauration costs and potentially a threat to life & assets.

With AFITEXINOV huge expertise in this field, we have identified few remedial ideas to provide solutions to mitigate the impact subject to each slope condition. Therefore, our new patented solutions - the **AFITER® 3D** range - is designed to offer first of its kind innovation to combine various products & techniques to mitigate practically all situations thanks to AFITEXINOV group exceptional technical and manufacturing capabilities.



AFITER® 3D G is the base product in the range. It is a soil retention geocomposite composed of :

a flexible three-dimensional reinforcement geogrid made from synthetic reinforcement cables (PET, PVA, etc.)

a nonwoven protection geotextile made of polypropylene.

Key advantages of this solution

- Stabilises the soil,
- Maintain topsoil or granular materials in place,
- Controlling erosion caused by climatic conditions,
- Encourages revegetation.

AFITER® 3D G can also be used to protect geomembranes if used, thanks to its protection geotextile. It thus enhances the stability of a layer of fill material on an embankment by increasing the friction between this fill layer and the support (excluding climatic aggression, but simply due to slippage). The forces due to the weight of the soil are not absorbed by the geomembrane.

The **AFITER® 3D** range is particularly well suited to :

- Road infrastructure,
- Capping waste storage facilities (ISD),
- Hydraulic structures

It offers a better ecological result that is commensurate to the landscape. This solution retains moisture, which encourages a better and stronger vegetation on slopes and embankments.



Installing this soil-retaining solution is extremely quick and easy, as it unrolls just like a standard geotextile.

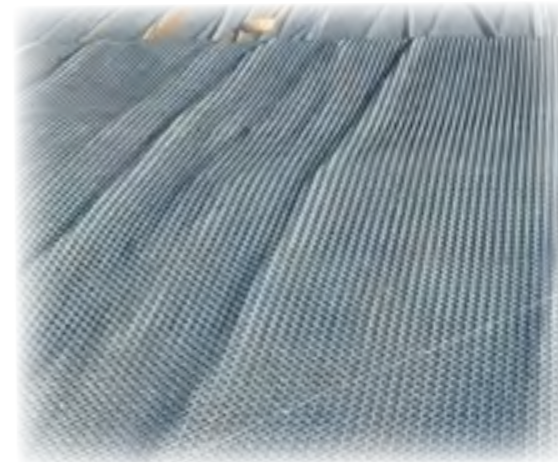
The product does not need to be anchored or hooked into the slope. It only needs to be fixed at the top, and its flexibility means it can adapt perfectly to the slope thanks to the uniquely arranged reinforcing HT PET cables.

For
slopes
&
embankments
up to 3H/2V

Mise
en tension
immédiate,
sans effet de
cisaillement

MULTI-PURPOSES

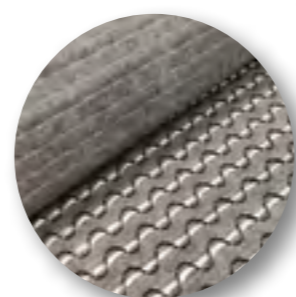
- Soil retention,
- Erosion control,
- Revegetation,
- Puncture protection,
- Moisture retention,
- Separation/filtration,
- Drainage (for the DRAINTUBE® version).



More infos ?
Flash this code !

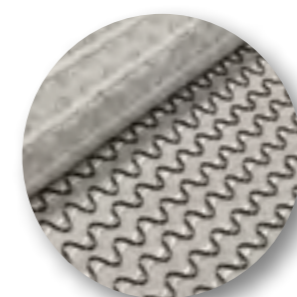


AFITER® 3D RANGE



AFITER® 3D G

combines a reinforcement geogrid with a protecting nonwoven geotextile. This is the classic version of the range.



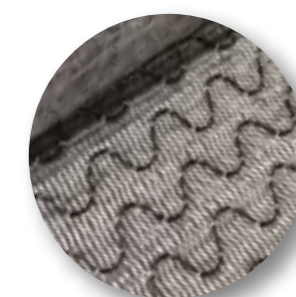
AFITER® 3D T

The protecting geotextile is replaced by a finer separation/filtration geotextile, allowing roots to pass through for deeper root anchorage in the embankment, ideal for shrub-like vegetation.



AFITER® 3D DRAINTUBE®

In this variant drainage function is added to AFITER® 3D® G is combined with the DRAINTUBE® drainage geocomposite.



AFITER® 3D 0/100

The reinforcement is crosswise, making it particularly suitable for small slopes, so that the product can be rolled out horizontally to save installation time.

BENEFITS

- Multifunctional global solution.
- Supports a reduction of the footprint of structures by steepening slopes.
- High stability over time for greater durability of structures.
- Easier planting of structures to blend in with the landscape and reduce carbon footprint.
- Easy and quick to install.
- Fights erosion and initial climatic impacts.
- For AFITER® 3D DRAINTUBE®, it has a high crushing strength.
- Large range of traction resistance, up to 450 kN/m.
- Large width (3.90 m) / roll lengths and layouts available on request.